

UNAVCO is a non-profit, membership-governed consortium that facilitates geoscience research and education using geodesy.



Boulder, Colorado
Main Offices

Currently there are 168
UNAVCO Members
(98 Full Members, 70
Associate Members)

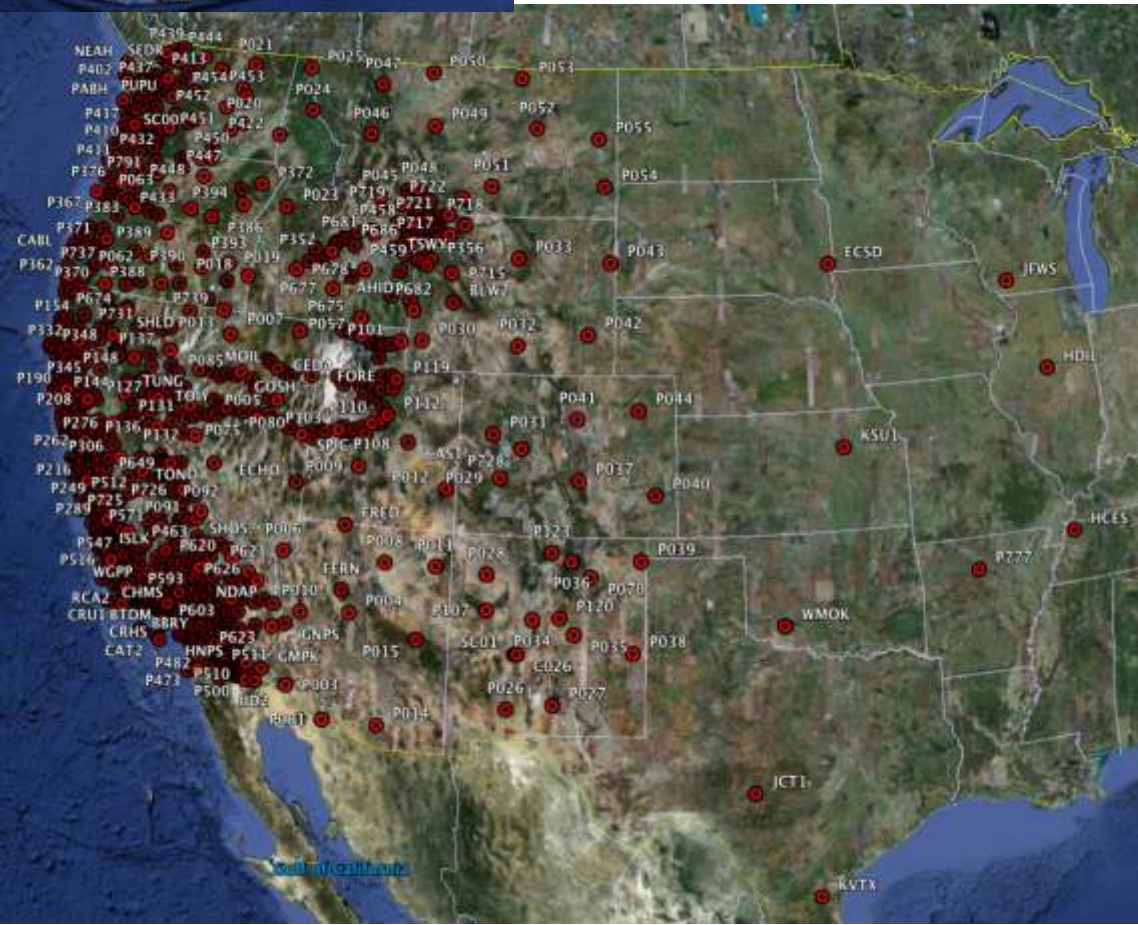


GPS/Met

- 1100 Continuous GPS**
- 100 Campaign GPS Systems**

Strain/Seismic/Tilt/Pore

- 74 Borehole Tensor Strainmeters**
- 5 Long Baseline Laser Strainmeters**
- 78 Short-Period Borehole Seismometers**
- 21 Borehole Tiltmeters**
- 23 Borehole Pore Pressure Gauges**





COCONet

CONTINUOUSLY OPERATING CARIBBEAN
GPS OBSERVATIONAL NETWORK

COCONet seeks to understand the factors that control earthquake and hurricane hazards by adding 50 high-precision permanent GPS stations to 50 existing ones. Ultimately, COCONet data will provide important information about meteorology, earthquakes, and volcanic activity.



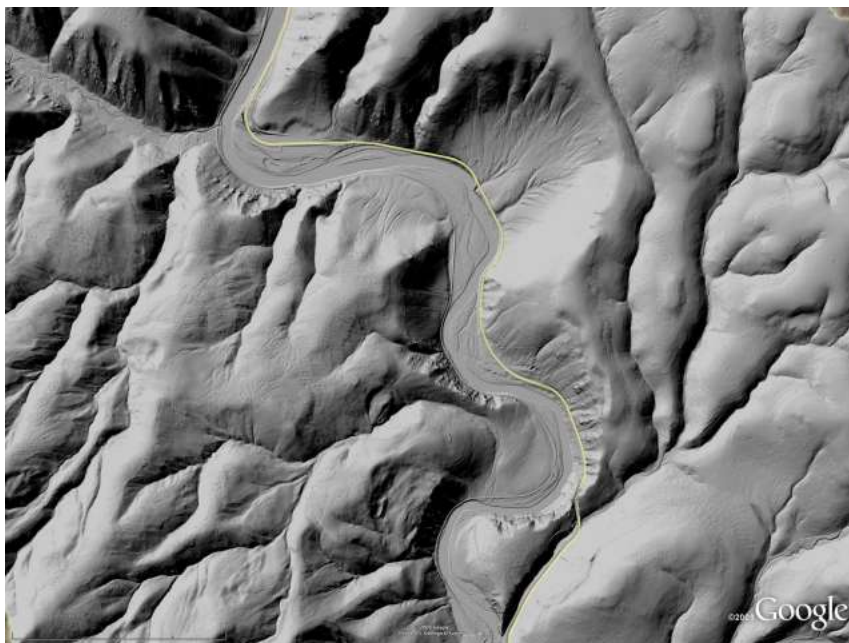
UNAVCO Data Center

Archive for GPS data since 1992

Hosting the WInSAR primary archive since 2005

Hosting the GeoEarthScope InSAR collection since 2007

Currently developing and coordinating archiving of LIDAR data from ground, airborne and space platforms



UNAVCO is supported by NASA to handle data management and web site presentation for the Geohazards Supersites/Natural Laboratories

SAR and other remotes sensing data are contributed by Space Agencies. UNAVCO and IRIS index available *in situ* data in the GEO-sponsored Supersites / Natural Laboratories.

Supersites has been highly successful as a data and results sharing mechanism for the catastrophic Haiti Earthquake, Chile Earthquake, and Tohoku-Oki Earthquake and Tsunami. In addition to Space Agency-contributed SAR, scientists post early analyses and results on Supersites Event pages.

The screenshot displays the GEO Supersites website interface. At the top, the 'SUPERITES' title is prominent. Below it, the 'GROUP ON EARTH OBSERVATIONS' logo is visible. The page features a navigation sidebar on the left with links for Home, Documents, Applications, Collaborations, Data, Publications, and Contact Us. The main content area includes a 'Welcome to the Supersite Website' section, a world map highlighting supersite locations, and a 'Summary' section detailing the initiative's goals and the role of the Group on Earth Observations (GEO). Logos for partner organizations such as ESA, JAXA, NASA, DLR, and ANF are displayed on the right side. The bottom of the page shows a detailed map of the Haiti region with a color-coded overlay, likely representing seismic activity or ground displacement data.

Current Country Totals From 23 Jun 2010 to 7 Jul 2011

distance in which individuals are clustered
 Dot sizes: ● = 1,000+ ● = 100 - 999 ● = 10 - 99 ● = 1 - 9 visits
 ● = Recent [?]

23 Jun 2010 to
 9 Sep 2011@08:34GMT: 12,168 visits
 Total since 22 Jun 2009: 17,163. Previous 24hrs: 29.

	United States (US)	2,962
	Italy (IT)	1,553
	China (CN)	853
	France (FR)	595
	Germany (DE)	518
	Japan (JP)	511
	Canada (CA)	388
	United Kingdom (GB)	338
	Spain (ES)	256
	Poland (PL)	181
	Netherlands (NL)	175
	Switzerland (CH)	164
	India (IN)	164
	Greece (GR)	125
	Korea, Republic of (KR)	123
	Turkey (TR)	122
	Russian Federation (RU)	119
	Chile (CL)	92
	Brazil (BR)	89
	Belgium (BE)	87
	Hong Kong (HK)	85
	Australia (AU)	81
	Argentina (AR)	80
	Iran, Islamic Republic of (IR)	75
	Portugal (PT)	66
	Norway (NO)	62
	Taiwan (TW)	54
	Austria (AT)	53
	Mexico (MX)	52
	Sweden (SE)	40
	Romania (RO)	39
	New Zealand (NZ)	36
	Indonesia (ID)	29

